

### Meeting

**Date:** Thursday, 6 June 2019  
**Time:** 6.30pm – 8.30 pm  
**Location:** Berwickshire High School, Langtongate, Duns, TD11 3QG

### AGENDA

**Doors open 6pm for tea and coffee – meeting starts at 6.30 pm**

|     |  |
|-----|--|
| 1.  | <b>Welcome and Introductions</b>   |
| 2.  | <b>Inspire Learning</b><br><br>An opportunity to see what it will look like and understand how it will benefit all teachers and pupils across the Scottish Borders.  |
| 3.  | <b>Provision of Outdoor Community Spaces</b> (Pages 3 - 12)<br><br>Update on the programme of work delivering a strategic network of outdoor community spaces, including current planned investment and recommendations on obsolete play areas. (Copy attached). |
| 4.  | <b>Jim Clark Rally 2019</b><br><br>Consultation on proposals by the rally organisers to hold an event on closed roads in Berwickshire on 8 and 9 November 2019.  |
| 5.  | <b>Feedback from Meeting on 2 May 2019</b> (Pages 13 - 16)<br><br>Copy Minute from meeting on 2 May 2019. (Copy attached).   |
| 6.  | <b>Rural Transport: Area Partnership Priorities</b><br><br>An opportunity for the Area Partnership to discuss specific rural transport related issues and priorities that should be raised at a planned rural transport conference (28 June 2019).               |
| 7.  | <b>Nomination for SBC Elected Member for the Community Council Scheme Review Working Group</b>   |
| 8.  | <b>Berwickshire Community Fund 2019-20 Applications</b>  |
| 9.  | <b>Open Forum</b>  |
| 10. | <b>Any Other Business</b>  |

|     |  |
|-----|--|
| 11. | <b>Date of Next Meeting</b><br>Thursday 5 September 2019 – venue to be confirmed |
|-----|--|

Please direct any enquiries to Eileen Graham Tel: 01835 826585  
Email: [eegraham@scotborders.gov.uk](mailto:eegraham@scotborders.gov.uk)

---



---

## **PUBLIC PLAY FACILITIES STRATEGY - BERWICKSHIRE**

**Report by Service Director Assets & Infrastructure**

---

### **BERWICKSHIRE AREA PARTNERSHIP**

**6 June 2019**

---

#### **1 PURPOSE AND SUMMARY**

- 1.1 This report sets out guidance and recommendations for the Berwickshire Area for future investment in Public Play facilities and proposals for the removal of obsolete play areas, agreed as part of the 2018/19 Capital Investment Plan and updated within the Capital Investment Plan 2019-20.**

**The 2019/20 Capital Investment Plan has funding of £5.036m for investment within Outdoor Community Spaces over the 10 years. This presents a tremendous asset for communities, however also brings a maintenance burden, for which no additional revenue resources are being provided. As part of the original investment within the 2018/19 Capital Investment Plan, it was simultaneously agreed by Council to review the distribution of play equipment provision across play parks in the Borders, which can 1) inform decision making around future investment in communities and 2) guide the rationalisation of obsolete play facilities which are deemed no longer fit for purpose, ensuring a cost neutral impact on established budgets with the service.**

- 1.2 The programme of investment in play facilities aims to improve community wellbeing and enhance activity levels for all ages with a beneficial impact on the health of the population. The programme of proposed projects across the Scottish Borders and an indicative timescale for delivery is provided at 3.2 for the period of 2018/19 to 2022/23. The programme proposes a range of provision including Children's Playparks, Pump bike/Skate tracks and Fitness/Youth Shelter provision as well as the rationalisation of obsolete equipment, where this is no longer fit for purpose.
- 1.3 In conjunction with the strategic investment across the region, Members previously agreed to;

- Changes to the scheme of delegation to give authority to the Service Director Assets and Infrastructure to *“after consultation with local Members, the Chief Financial Officer and the Chief Legal Officer, declare play parks obsolete or those surplus to community requirements and arrange for the removal of equipment and disposal, if appropriate.”*
  - Create a reference group which would include the remit to *“make recommendations to the Service Director Assets & Infrastructure or the Executive Committee (as appropriate) on which obsolete play areas should be removed, particularly in areas where there has been significant investment.”*
- 1.4 In this context, officers have undertaken an appraisal of the wider network of play equipment aimed at responding to the issue of low play value, which SBC has within its play facilities assets. The evaluation has been undertaken to ensure that SBC retains and develops a network of valued, well equipped spaces for local communities. In the Scottish Borders currently the quantity of play provision is high per head of population, but the quality is very low (compared to national benchmarking) – this diminishes the wider benefits of these facilities to communities. This programme of investment will address the challenge of balancing quantity against quality, ensuring optimal provision of play facilities across the network.
- 1.5 Areas of low value play facilities where there is a recognised need (i.e. the only play park in the locality) will be identified as priorities for potential future investment (subject to a future paper).
- 1.6 As no additional revenue resources are being provided to support the long term management and maintenance of the new play parks being created, the removal of obsolete facilities is essential to ensure there is a cost neutral impact on established budgets with the service. No play facility will be decommissioned until the appropriate investment in new facilities in that locality have been completed.

## **2 RECOMMENDATIONS**

- 2.1 **Officers request that the Area Partnership acknowledge the proposals contained in the report and;**
- (a) Officers request feedback on any specific aspects the Area Partnership wishes to be considered prior to the implementation of the report as outlined, and;**
  - (b) Notes that no play part will be decommissioned until the investment in the new play parks has been completed.**

### 3 BACKGROUND

- 3.1 The Scottish Borders currently has 243 play parks, including those located within schools, ranging from smaller local areas for play (LAPs) to strategic destination play parks. Benchmarking informs us that the quantity of provision per head of population is significantly higher than the national average; however, the average play value of the facilities (i.e. quality of provision) is significantly lower than the national average. The trend over the past decade has seen play value slowly improving on the back of the incremental investment that has taken place.
- 3.2 In recent years a more significant level of investment in play across the Scottish Borders has been delivered through the Council's capital programme supplemented by a range of different opportunities that have been realised by community led initiatives including funding from developer contributions, Scottish Government or Heritage Lottery Fund grants. (See Appendix B) These include, most recently, facilities in Wilton Lodge Park, Hawick and in the Public Park, Galashiels where the new facilities are providing significant benefits to these communities. The strategy is to now provide further additional high quality facilities in a range of other locations across the region thereby encouraging play, greater physical activity and outdoor access for children, young people and adults with attendant benefits in terms of general health and wellbeing for people of all ages. The programme of investment in play reinforces or establishes destination play parks that serve both the wider community and visitors to the area. The programme, outlined below in Table 1 (see Appendix A for narrative), sets the context for refining and rationalising the wider network with Berwickshire sites highlighted in bold italics:

| <b>Planned Programme of Works</b>     | <b>2018<br/>/19<br/>£'000</b> | <b>2019/20<br/>£'000</b> | <b>2020<br/>/21<br/>£'000</b> | <b>2021<br/>/22<br/>£'000</b> | <b>2022<br/>/23<br/>£'000</b> | <b>Total</b> |
|---------------------------------------|-------------------------------|--------------------------|-------------------------------|-------------------------------|-------------------------------|--------------|
| <b>Children's Play</b>                |                               |                          |                               |                               |                               |              |
| Galashiels - Public Park*             | 292                           | 0                        | 0                             | 0                             | 0                             | 292          |
| Oxton*                                | 60                            | 0                        | 0                             | 0                             | 0                             | 60           |
| Stow*                                 | 30                            | 0                        | 0                             | 0                             | 0                             | 30           |
| Kelso - Shedden Park                  | 248                           | 0                        | 0                             | 0                             | 0                             | 248          |
| Jedburgh – Harestanes                 | 315                           | 0                        | 0                             | 0                             | 0                             | 315          |
| <b><i>Coldstream - Home Park*</i></b> | <b>0</b>                      | <b>250</b>               | <b>0</b>                      | <b>0</b>                      | <b>0</b>                      | <b>250</b>   |
| Peebles Play park                     | 0                             | 225                      | 0                             | 0                             | 0                             | 225          |
| Earlston Play park                    | 0                             | 0                        | 225                           | 0                             | 0                             | 225          |
| <b><i>Duns - Public Park</i></b>      | <b>0</b>                      | <b>0</b>                 | <b>135</b>                    | <b>0</b>                      | <b>0</b>                      | <b>135</b>   |
| <b><i>Eyemouth - The Bantry</i></b>   | <b>0</b>                      | <b>0</b>                 | <b>180</b>                    | <b>0</b>                      | <b>0</b>                      | <b>180</b>   |
| Jedburgh - Canongate                  | 0                             | 0                        | 0                             | 135                           | 0                             | 135          |
| <b>Pump Tracks/Skate Boarding</b>     |                               |                          |                               |                               |                               |              |
| Hawick - Wilton Lodge Pump Track      | 19                            | 0                        | 300                           | 0                             | 0                             | 319          |
| Peebles Skate Park                    | 0                             | 270                      | 0                             | 0                             | 0                             | 270          |
| Jedburgh Skate Park                   | 0                             | 0                        | 0                             | 270                           | 0                             | 270          |
| Galashiels Public Park                | 0                             | 0                        | 0                             | 0                             | 270                           | 270          |

| <b>Fitness/Youth Shelter Provision</b> |              |            |              |            |            |              |
|--|--------------|------------|--------------|------------|------------|--------------|
| Jedburgh - Harestanes                  | 27           | 0          | 0            | 0          | 0          | 27           |
| Hawick - Wilton Lodge Park             | 0            | 27         | 0            | 0          | 0          | 27           |
| Galashiels - Scott Park                | 0            | 0          | 27           | 0          | 0          | 27           |
| Peebles – Hay Lodge Park               | 0            | 0          | 0            | 27         | 0          | 27           |
| <b>Duns - Public Park</b>              | <b>0</b>     | <b>0</b>   | <b>0</b>     | <b>27</b>  | <b>0</b>   | <b>27</b>    |
| Kelso                                  | 0            | 0          | 0            | 0          | 27         | 27           |
| <b>Other required Works</b>            |              |            |              |            |            |              |
| Gavinton Drainage                      | 43           | 0          | 0            | 0          | 0          | 43           |
| <b>Eyemouth*</b>                       | <b>11</b>    | <b>0</b>   | <b>0</b>     | <b>0</b>   | <b>0</b>   | <b>11</b>    |
| Clovenfords (landscape)*               | 1            | 0          | 0            | 0          | 0          | 1            |
| Play Facilities & surfacing review     | 0            | 75         | 75           | 75         | 24         | 253          |
| General upkeep                         | 0            | 100        | 105          | 106        | 107        | 418          |
| Upkeep of School play facilities       | 0            | 0          | 0            | 0          | 0          | 0            |
| Unallocated                            | 0            | 0          | 0            | 0          | 400        | 400          |
| <b>Total of programmed works</b>       | <b>1,046</b> | <b>947</b> | <b>1,047</b> | <b>640</b> | <b>828</b> | <b>4,508</b> |

- 3.3 Alongside these strategic sites, the Council is committed to reviewing the wider network to ensure that local play provision continues to best serve communities. The initial appraisal identified that the Scottish Borders has a relatively large proportion of play parks of 'Low Value'. At the same time the region has relatively large number of play parks per 1000 children according to benchmarking data – almost 3 times the national average. In summary, the breakdown is as follows;

| <b>Play Value</b>   | <b>No. of Play Areas</b> |     |
|---|--------------------------|-----|
| High  | 32                       | 16% |
| Medium  | 89                       | 46% |
| Low   | 73                       | 38% |
| <b>TOTAL</b>  | <b>194</b>               |     |
| (n.b. this does not include the 49 play parks within the school estate) |                          |     |

| <b>Benchmarking data: Number of play areas per 1000 children</b> |              |                         |
|--|--------------|-------------------------|
|  | <b>SBC</b>   | <b>National Average</b> |
| <b>2015/16</b>   | <b>10.72</b> | <b>3.69</b>             |

The investment programme seeks to redress the balance between quantity and quality, through rationalising the estate and targeting resources to those areas of higher impact.

## **4 REVIEW OF PLAY PARKS**

- 4.1 A review of the whole network of play parks has considered the following criteria;

- 1. Play Value (a standard assessment based on Fields in Trust criteria)**
- 2. In-house inspection**
- 3. Proximity to other similar or better facilities**
- 4. Tenure**

#### 4.2 **Play Value**

Sites of low and medium value, based on the Fields in Trust national criteria for play park assessment, have been identified. This takes into account, the site features for each park, quality and range of equipment, challenge and social aspects associated with use of the equipment.

#### 4.3 **Inspection**

Alongside the Fields in Trust play value assessment, specialist officers have assessed the quality and condition of each play area, range of equipment, and level of use.

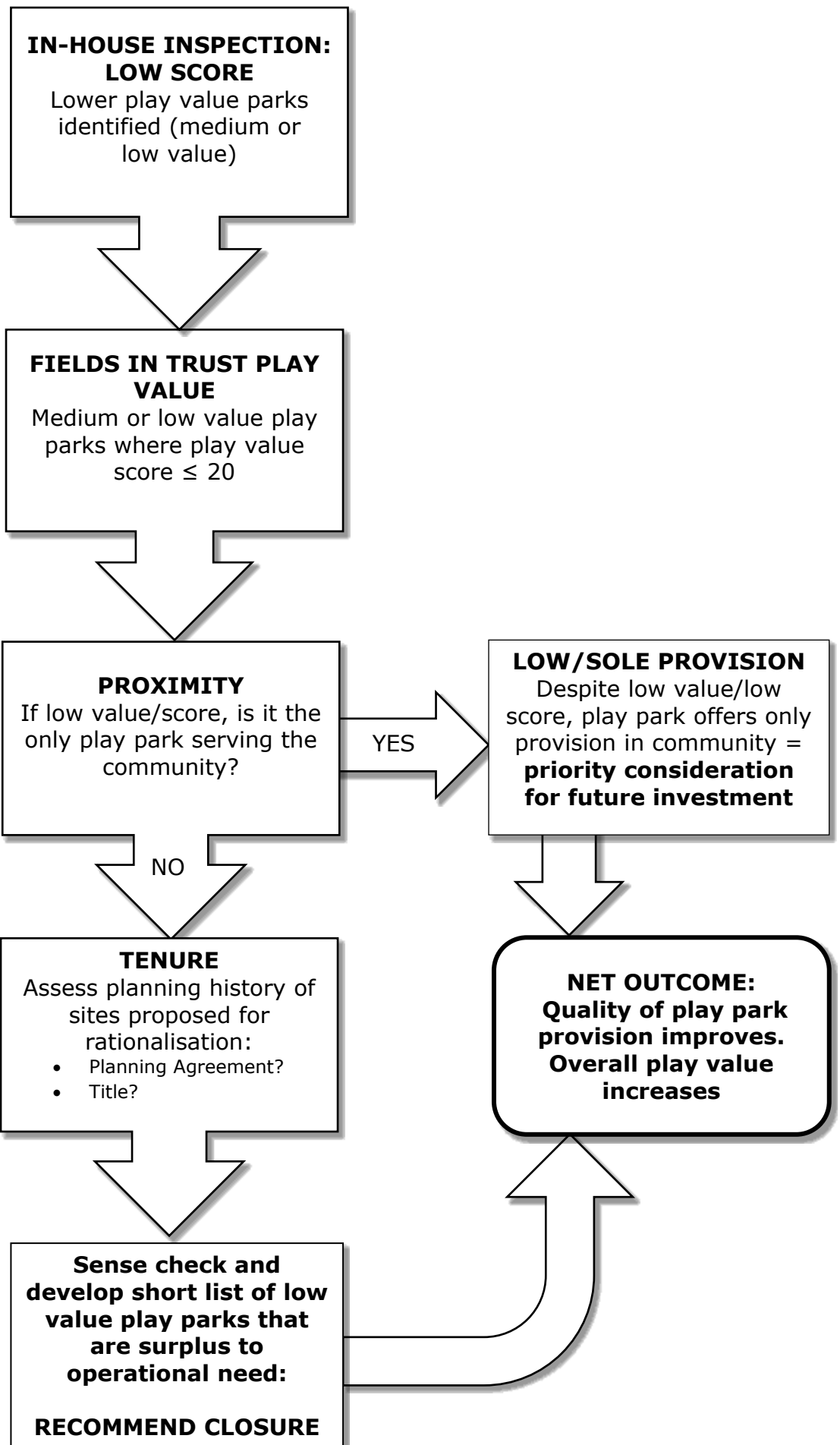
#### 4.4 **Proximity to other similar or better facilities**

The location and distribution of play equipment has been appraised, taking into account the communities served – smaller communities or neighbourhoods where provision is dependent on one facility rely on continued provision of the same or equivalent play space. Neighbourhoods where provision comprises several low value play parks are not reliant on the continued provision in one site only, provided the overall provision in the neighbourhood is taken into account. Based on the above assessment of quality and distribution, the level of need for each individual play park can be appraised. Where quality is low, but form the only play park in the locality, these sites can be considered for longer term investment. Where quality is low and other, better, facilities are in close proximity, facilities can be considered as potentially surplus to requirement.

#### 4.5 **Tenure**

Provision of some play facilities within the network has been integral to development contributions through the planning system. The terms upon which provision has been made require review and consideration as to how to progress in relation to these play areas will be required, perhaps in discussion with Regulatory Services.

4.6 The assessment process is outlined in the chart below;





#### 4.7 **Outcome**

Based on the above 4 stages of assessment, numerous play parks have been identified as surplus to operational need. These are play parks of low value/need in an area where other provision is available which either demonstrates better quality provision or scope for improvement. Through the recommendations outlined in this report, resources can be focussed on areas of most benefit/need.

4.8 As a result of this assessment, the 74 play parks listed in the following table have been identified as meeting the criteria for being decommissioned, of which eight are in Berwickshire;

| REF NO. | LOCALITY | PLAY PARK                   | PLAY VALUE | FIT SCORE | ALTERNATIVE LOCATION NEARBY |
|---------|----------|-----------------------------|------------|-----------|-----------------------------|
| 24      | BERW     | Burnmouth Lower Site        | L          | 20        | Burnmouth Upper             |
| 11      | BERW     | Chirnside Lammerview        | L          | 19        | Chirnside Windram Park      |
| 36      | BERW     | Coldstream Lees Farm        | L          | 14        | Coldstream Home Park        |
| 34      | BERW     | Coldstream Douglas Court    | L          | -         | Coldstream Home Park        |
| 195     | BERW     | Duns Ainslie Terrace        | L          | 15        | Duns Park                   |
| 196     | BERW     | Duns Trinity Park           | L          | 10        | Duns Park                   |
| 22      | BERW     | Eyemouth Stebbings Rise     | L          | 18        | Eyemouth Gunsgreen          |
| 201     | BERW     | Eyemouth Hallydown Crescent | L          | 14.5      | Eyemouth Coldingham Road    |

As summarised above, these sites have been identified as being suitable for decommissioning, based on the condition/value and alternative provision nearby. All are within the catchment area of an area of strategic investment.

4.9 The assessment has identified sites that are classed as low value, yet as the only play park in the community they offer an important facility. This forms a basis for the future longer term programme of investment, which will be the subject of future reporting.

## **5 FINANCIAL IMPLICATIONS**

5.1 The 2019/20 Capital Investment Plan has funding of £5.036m for investment within Outdoor Community Spaces over the 10 years.

5.2 The investment in new facilities is estimated to create an additional pressure on resources to maintain the new facilities of approximately 12k per year. The risk assessment for these facilities will result in a requirement for the service to increase the frequency of inspections and experience also tells us that the amount of repairs will be greater as a result of the increased use, wear and tear of shackles and swing seats etc. As no additional revenue resources are being provided to support the long term management and maintenance of the new play parks being created, the removal of obsolete

facilities is essential to ensure there is a cost neutral impact on established budgets with the service.

- 5.3 Within the 2019/20 Revenue Financial Plan a revenue pressure has been identified from 2020/21 to instate a replacement fund for Outdoor Community Spaces, to ensure their future provision.

## **6 FINANCIAL IMPLICATIONS**

### **6.1 Risk and Mitigations**

There is a reputational risk to the Council from the rationalisation of facilities. Communities may be initially concerned that provision is being reduced, however this will be mitigated by any communications or engagement drawing attention to the net gain afforded in play facilities for all through the programme of investment.

### **6.2 Equalities**

It is anticipated that there are no adverse impact due to race, disability, gender, age, sexual orientation or religion/belief arising from the proposals in this report.

### **6.3 Acting Sustainably**

There are no direct economic, social or environmental issues with this report although there may be within individual projects and these will be identified and addressed as appropriate as part of their specific governance arrangements.

### **6.4 Carbon Management**

There are no direct carbon emissions impacts as a result of this monitoring report; however, there may be within individual projects and these will be identified and addressed as appropriate as part of their specific governance arrangements.

### **6.5 Rural Proofing**

This report does not relate to new or amended policy or strategy and as a result rural proofing is not an applicable consideration.

### **6.6 Changes to Scheme of Administration or Scheme of Delegation**

None.

## **7 CONSULTATION**

- 7.1 The Chief Financial Officer, the Monitoring Officer, the Chief Legal Officer, the Chief Officer Audit and Risk, the Service Director HR, Communications and the Clerk to the Council have been consulted and any comments received have been incorporated into the final report.

- 7.2 In addition to the above, the overarching report was approved by the Corporate Management Team and the Members Reference Group, who requested Area Partnership consultation.

**Approved by**

**Martin Joyce**

**Service Director Assets & Infrastructure Signature .....**

**Author(s)**

| Name         | Designation and Contact Number   |
|--------------|----------------------------------|
| Jason Hedley | Neighbourhood Operations Manager |

**Background Papers: Capital Programme 2018/19 – Investment in Play Areas and outdoor Community Spaces, Report by Service Director Assets & Infrastructure, 31 May 2018**

**Previous Minute Reference:** Scottish Borders Council, 31 May 2018 – Item 7.0

**Note** – You can get this document on tape, in Braille, large print and various computer formats by contacting the address below. Capital and Investment Team can also give information on other language translations as well as providing additional copies.

Contact us at Jacqueline Whitelaw, Council Headquarters, Newtown St Boswells, TD6 0SA, 01835-824000, ext. 5431.

## APPENDIX A – CONTEXT: SUMMARY OF RECENT INVESTMENT

| LOCATION                                 | SUMMARY  |
|--|--|
| <b>Pringle Park, Selkirk</b>             | Selkirk's Pringle Park (2013) and Bannerfield Park (2014) have both undergone significant improvements led by community groups who fundraised for capital costs. Scottish Borders Council provides ongoing support via operational inspections and minor repairs.  |
| <b>Tweedbank Park</b>                    | In 2008 Tweedbank Loch and Park was developed as a destination play area at the Loch, complete with Multi Use Games Area (MUGA), on the back of significant funding secured by Developer Contributions.  |
| <b>Canongate, Jedburgh</b>               | The Canongate play area in Jedburgh, received a £145k investment in 2010 as part of a successful bid to the Scottish Government's Town Centre Regeneration Fund.   |
| <b>Woodcote Park, Lauder</b>             | As part of the relocation of community services, Woodcote Park in Lauder received a significant Council investment in 2012 to create a new relocated play area and associated sporting facilities at the park.   |
| <b>Wilton Lodge Park, Hawick</b>         | The Heritage Lottery Funded (HLF) Parks For People Project at Wilton Lodge Park, Hawick, saw the conclusion in 2017 of a £350k project to create a destination play area complete with associated infrastructure at the park.  |
| <b>Shedden Park skate park, Kelso</b>    | The recently-completed removal of an existing Skate Park and creation of a state of the art small wheels facility at Shedden Park, Kelso (£400k) has been led by the community.  |
| <b>Public Park, Galashiels</b>           | A £292k investment has overhauled the play park provision at Public Park, Galashiels, developing a destination Play Park serving the town and surrounding villages   |
| <b>Harestanes Country Park, Jedburgh</b> | The first project of the current programme has been completed and opened on Sunday 28 <sup>th</sup> April. This destination playpark contains a significant amount of play opportunities for less able children and users and extends the Councils facilities in terms of offering play opportunities for all, £342k |
| <b>Home Park, Coldstream</b>             | Installation of new facilities underway, completion estimated June/July 2019   |
| <b>Shedden Park, Kelso</b>               | Installation estimated to begin in June/July, with completion in Aug/Sep   |

**SCOTTISH BORDERS COUNCIL  
BERWICKSHIRE AREA PARTNERSHIP**

MINUTE of Meeting of the BERWICKSHIRE  
AREA PARTNERSHIP held in Coldstream  
Community Centre, Coldstream on Thursday  
2 May 2019 at 6.30 pm

Present:- Councillors J. A. Fullarton (Chair), C. Hamilton, H. Laing, D. Moffat, M. Rowley, together with 16 representatives from Partner Organisations, Community Councils and members of the public

Apologies:- Councillor Greenwell  
In Attendance:- Communities & Partnership Manager, Strategic Community Engagement Officer, Locality Development Co-ordinator, Clerk to the Council, Trainee Democratic Services Officer

**1. WELCOME AND INTRODUCTIONS**

Councillor Fullarton welcomed everyone to the Berwickshire Area Partnership and thanked the Community Councils, Partners and local organisations for their attendance. He outlined the programme for the evening and introduced the speakers.

**2. CONSUMPTION OF ALCOHOL IN PUBLIC SPACES**

2.1 The Chairman also extended a welcome to Nuala McKinlay, Chief Legal Officer, who advised on Scottish Borders Council's consultation on the Consumption of Alcohol in Public Places. The purpose of the consultation was to determine the views of Borders citizens, groups and interested parties on the impact of public consumption of alcohol in our communities. Mrs McKinlay explained that in 2013, Scottish Borders Council (SBC) had considered the introduction of byelaws to prohibit drinking in public places. The process resulted in a draft byelaw being drawn up which would have brought restrictions in place in a number of Border towns. The process had been very lengthy and only came to a conclusion at the end of last year. Following a consultation process, in 2018, the Council decided not to introduce byelaws due to a range of factors which included changes in licensing laws. The previous consultation received a fairly low level of response and SBC was keen to encourage participation and to ensure that views were received from a broad range of people and groups. The Council had however agreed to this new consultation which had been launched in Berwickshire with over 400 responses already received. The purpose of this consultation was to determine the views of Borders citizens, groups and communities to inform the Council in considering if there were areas in the Scottish Borders where drinking alcohol in public places was causing problems. Mrs McKinlay encouraged participation in the consultation, with copies of the questionnaire available on the tables at the meeting and on the Council's website. Details of the consultation had been sent out to a range of bodies and officers were attending each Area Partnership meeting. The closing date for responses was 30 June 2019. Following an analysis of the responses and subject to the responses received, a further consultation exercise may be carried out in the autumn, with a report back to Council by the end of 2019 to decide on whether the matter would be pursued.

2.2 Mrs McKinlay responded to a number of questions raised explaining that the byelaws would cover any public places not covered by a licence e.g. public parks. There could be exemptions for events such as Common Ridings and Rugby Sevens. Occasional licences could also be granted for special events. If introduced, the Police would enforce the byelaws; Police Scotland and NHS Borders were key partners in the consultation process. Regarding devolving the decision to Area Partnerships, Mrs McKinlay advised that Area Partnerships could make recommendations to Council, but ultimately the decision was made by Scottish Ministers. Mrs McKinlay went on to stress that the aim of this Phase 1

consultation was not to introduce a further byelaw but to determine whether there were problems regarding public alcohol consumption and if a byelaw would be helpful in addressing it or if there was a desire to look in more detail at the introduction of a byelaw.

- 2.3 The Alcohol & Drugs Partnership Co-ordinator, Susan Elliot, who was in attendance, made comment on the Council's consultation. Ms Elliot highlighted that one in four adults were drinking to excess and that children exposed to alcohol by parents were more likely to drink alcohol. NHS Borders' view was that the introduction of byelaws would be an effective tool to reduce consumption and could change the mind-set of the public around the availability of alcohol; restriction could also help in terms of people's overall health. Ms McKinlay stressed that participation in the consultation was being encouraged and to spread the word to take part, in particular to gain the views of groups within Scottish Borders. In response to a question, Mrs McKinlay explained that any premises with an occasional licence would not be affected and this would cover beer gardens, social events, festivals etc. and any event with no licence – i.e. cheese and wine parties held in gardens, would then require a licence. Mrs McKinlay advised that Police Scotland did not have the tools at present to deal with the drinking of alcohol in public places and criminal law was not sufficient and would benefit from a supplementary byelaw to interact with persons causing a nuisance/breach of peace whilst drinking alcohol. After further discussion, covering all aspects and areas of this consultation, the Chairman thanked Mrs McKinlay and Ms Elliot for their attendance and encouraged everyone to participate in the consultation.

**DECISION  
NOTED.**

3. **FEEDBACK FROM MEETING ON 7 FEBRUARY 2019**

The Minute of the Meeting of the Berwickshire Area Partnership held on 7 February 2019 had been circulated along with a summary of the discussion attached as an appendix to the Minute. The Chairman gave some highlights from the feedback received at that meeting.

**DECISION  
AGREED the Minute.**

4. **DRAFT BERWICKSHIRE LOCALITY PLAN**

The Communities & Partnership Manager, Shona Smith, explained that the Draft Locality Plan, which had been circulated with the agenda, took into account all the comments and feedback from discussions that had taken place at the previous four themed meetings of the Area Partnership. The priorities and key priorities about what was important and what would make a difference to the lives of people in the Berwickshire area, within each theme, had been identified and listed in the draft Plan. Those present were now asked to review the draft and assess whether the Plan had missed any significant areas of discussion and to consider if they agreed with the priorities and key priorities that had been identified. It was explained that there would be a 20 minute discussion on each of the four themes within the draft Plan with a facilitator responsible for that theme moving between each of the four tables to record the input. For each theme the questions were asked: 'Whether you agree with the priorities raised; had anything been missed; what would success look like; how could we work in partnership to achieve this; and how do I get involved?'. Feedback from the discussions on the draft Plan would be used to inform development of the final Berwickshire Locality Plan. It was noted that Local Community Action Plans and Learning Community Partnership Plans would also form part of the Locality Plan.

**DECISION  
NOTED.**

5. **LOCALITIES BID FUND UPDATE**

Shona Smith gave an update on the Localities Bid Fund (LBF). There had been a good response to the process. All projects were on the website with all the required information available. Officers were now in the process of communicating with groups to go forward to a public vote. Ms Smith went on to explain the registration process and that voting would be online or at the one-day public event. Further details on the process and timescales would be confirmed soon and featured on SBC's website.

**DECISION  
NOTED.**

**6. NEIGHBOURHOOD SMALL SCHEMES**

The Chairman referred to a note by the Service Director and Infrastructure, copies of which had been circulated to Members at the meeting. The note requested Members' approval to delegate authority to the Service Director Assets and Infrastructure to approve Small Scheme applications in 2019/20 subject to the criteria detailed in the note.

**DECISION**

**AGREED to delegate authority to the Service Director Assets & Infrastructure to approve Small Scheme applications in 2019/20, subject to the conditions detailed in the report.**

**7. OPEN FORUM**

In response to a question raised on the remit of the Council to train all community councillors, the Clerk to the Council, Jenny Wilkinson, advised that training would be made available and would be offered in the Berwickshire area if there were enough people attending. With regard to a question about teacher absence, as this was a very specific instance, Ms Wilkinson advised she would be happy to take this matter back to the Service Director, but it could not be discussed at a public meeting. The Chairman then advised that ownership of the Locality Plan rested with the community in the form of the whole Area Partnership. Actions would be developed and measures added to take forward the priorities. Shona Smith further advised that the Scottish Borders Community Plan would be led by the Community Planning Partnership, which had a multi-agency approach with communities. Councillor Rowley, Chair of the Community Planning Strategic Board, advised that while there was a Borders wide Community Plan, the Berwickshire Locality Plan took up local issues and would be a live document, constantly updated and reviewed. Actions would be developed and could be delivered by a number of agencies, but where possible a named lead would be included. A question was raised about a specific budget for the Partnership, and Ms Smith advised that no specific funds were allocated for the Plan, but a number of funding options were available which would vary depending on the action being taken forward. The Chairman thanked everyone for the time spent on the Plan and all comments from the meeting.

**DECISION  
NOTED.**

**8. DATE OF NEXT MEETING**

The next meeting of the Berwickshire Area Partnership was scheduled for Thursday 6 June 2019 at Whitsome Ark where there would be a briefing on the Community Fund and Area Partnership Reviews. Councillor Fullarton thanked all those who had attended the meeting for their participation and input.

***The meeting concluded at 8.40pm***

This page is intentionally left blank